

2006 Sheep Tagging Advice Sheet – England, Scotland & Wales

Animals.....

moving off holding of birth (HOB);

Baseline tag: UK 123456 000001 (any colour except red)

moving off holding they were not born on and where not already baseline tagged.

Baseline S tag; S123456 000001 (any colour except red)

moving off holding other than where a baseline, baseline S or R tag was applied.

S Movement tag: S123456 (no individual number - any colour except red)

having either tag lost and where their details are not accurately known.

R Replacement tag: UK123456 000001R (red only)

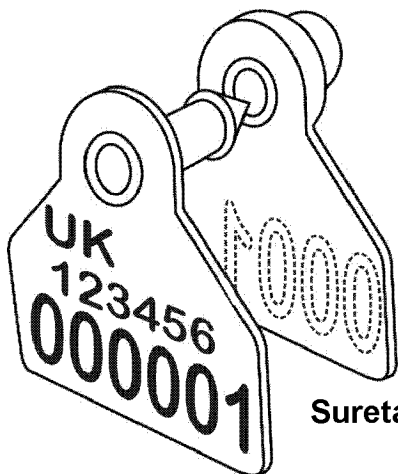
imported from outside the EU and tagged at the first holding they arrive on

F Tag: UK 123456 000001F (any colour except red)

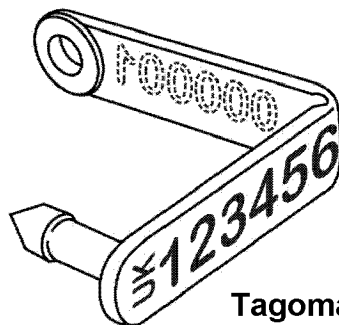
being exported if not identified with two UK tags (double tags)

X Tag: UK 123456 000001F (any colour except red)

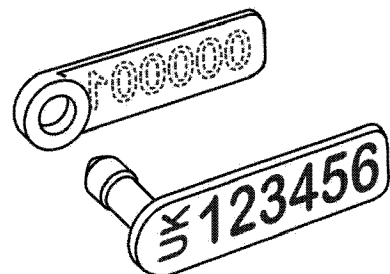
Leading Zero's are only printed before the unique animal ID if DEFRA specify the holding is in Scotland when allocating the number sequence to Dalton. For England & Wales no leading zero's are printed.



Suretag



Tagomatic



Rototag

Breed Society and /Management information must not interfere with the string of characters in the official number eg. UK123456 AB123456 or UK123456 000001AB. It is therefore recommended that where additional information is required that all official marks be printed on one side of the tag only as per the examples below.

